



# CRETE-LEASE<sup>®</sup> 880-VOC-Xtra Release Agent Specification Sheet

### Environmental Report Card

- ✓ VOC compliant
- ✓ Non-carcinogenic
- ✓ Solventless

## 1. PRODUCT NAME

Crete-Lease 880-VOC-Xtra  
Release Agent

## 2. MANUFACTURER

Cresset Chemical Co., Inc.  
One Cresset Center  
Weston, Ohio 43569

**800-367-2020** USA & Canada  
419-669-2041  
(FAX) 419-669-2200

www.Cresset.com  
Cresset@Cresset.com

## 3. PRODUCT DESCRIPTION

**Basic Use:** Crete-Lease 880-VOC-Xtra permits easy stain-free removal of forms, formliners, pallets, etc. from hardened concrete. It:

- Cuts form clean-up time up to 70% when properly applied
- Can reduce bugholes on concrete surfaces
- Doesn't interfere with adhesion of caulk, architectural coatings, paint, sealers and curing compounds on cured concrete surfaces when properly applied
- Can be applied in sub-freezing or very hot temperatures
- Reduces incidences of skin rashes
- Promotes longer form life by acting as a water repellent from inside the wood
- Produces high visual impact (CCS 1 - [www.cresset.com/ccs.htm](http://www.cresset.com/ccs.htm)) concrete surfaces
- Does not stain or stick from steam curing
- Increases volume that may be stored and simplifies DOT driver and HazMat regulations.

**Limitations:** a. Not recommended for forms or formliners made from expanded polystyrene, SBR, or natural rubber or latexes made of these. Use Crete-Lease 20-VOC-Xtra on any form or formliner.

b. Although subfreezing temperatures have no effect on the releasing action of Crete-Lease 880-VOC-Xtra, temperatures below freezing promote thicker film thicknesses which causes more bugholes.

## TABLE OF PROPERTIES

Color	Straw
Opacity	Clear
Freeze Damage	None
Flash Point	220°F (105°C)
Viscosity (centipoises)	15 @ 68°F (20°C)
Solids	None
Pounds per gallon	7.37
VOC	240 g/L

**Composition:** A proprietary blend of neutralized vegetable oils in mineral oil. Contains no waxes, no silicones...no carcinogens.

**Ground Shipping in the USA:** Containers holding 275 gallons, 55 gallons or 5 gallons or less (regardless of quantity) are not federally regulated and shipping product in the Cresset package does not require following hazardous shipping requirements. Drivers do not need a HazMat endorsement of their CDL. DOT HazMat training is not required.

**Applicable Standards:** Exceeds California's SCAQMD rule 1113-90 (250g/l). "Cresset Concrete Standards", a photographic appearance guide. Corps of Engineers, "Civil Works Construction Guide Specifications," CW-03101, Section 5.3 and Section 8. Corps of Engineers, "Guide Specification Military Construction," CEGS-03300, Section 10.8.

## 4. TECHNICAL DATA

Please see Tables.

## 5. APPLICATION

**Preparatory Work:** Form surfaces must be extremely clean to produce architectural surfaces CCS 1, CCS 2 and CCS 3 - [www.cresset.com/ccs.htm](http://www.cresset.com/ccs.htm). Even very small amounts of buildup, dust or debris show on the final surface.

Use only non-porous form and formliner surfaces to achieve CCS 1, CCS 2 and CCS 3 concrete surfaces.

Apply Crete-Lease 880-VOC-Xtra about 20 minutes before placing concrete, or up to 14 days before if treated surfaces are protected from dust and debris.

**Dilution:** Use as is...any dilution with fuel oil, diesel fuels, or mineral spirits promotes an increase in stripping difficulties, concrete build-up, bugholes, soft spots, staining and violates California rule 1113-90.

**CCS 1 Application Guidelines:** Non-porous form surfaces are critical to achieve CCS 1.

a. Wipe on an ultra thin film of Crete-Lease 880-VOC-Xtra Release Agent with a clean, soft flannel cloth that is moist, not wet, with release agent. Wipe out "brush strokes". b. Spray textured form or formliners then "wipe off" with a clean, soft flannel cloth that is moist, not wet, with Crete-Lease 880-VOC-Xtra Release Agent.

Properly executed, either procedure produces an ultra thin film of Crete-Lease 880-VOC-Xtra Release Agent less than 0.0005 inch...about 1/3 as thick as a human hair. This ultra thin

## TABLE OF FORM AND FORMLINER COMPATIBILITY

Plywood	All Grades, Pre-oiled, Overlaid (LDO, MDO, HDO)
Plastics	Fiberglass Reinforced, ABS, PVC
Coatings	Epoxy, Urethane
Elastomerics	Urethane, Silicone
Steel	
Aluminum	
Wood	

film helps produce bughole-free concrete surfaces without stains and without problems of adhesion of caulk or other coatings. Forms strip cleanly and easily.

**CCS 2 Application Guidelines:** Spray Crete-Lease 880-VOC-Xtra in an ultra thin film from 0.0005 to 0.001 inch thick.

Hold the spray tip 12 to 18 inches from the form. CCS 2 requires the use of non-porous forms and formliners. Only spray with flat spray tips...8001 or finer. Adjust pressure to provide a flow rate through the spray tip of about 12 ounces per minute for the 8001 spray tip.

**CCS 3 Application Guidelines:** Spray apply Crete-Lease 880-VOC-Xtra in a thin film from 0.001 to 0.0025 inch thick. Use non-porous form surfaces to produce CCS 3. Use flat spray tips 8001 or finer. Flow rates through the spray tip should be about 12 ounces per minute for the 8001 spray tip.

**CCS 4 Application Guidelines:** Spray Crete-Lease in a film from 0.0025 to 0.0045 inch thick. Use any form or formliner, including any grade of plywood. Flat spray tip 8001 is recommended.

**CCS 5 Application Guidelines:** Spray apply Crete-Lease Release Agent from 0.0045 to 0.0065 inch thick. Use any type of form.

**CCS 6 Application Guidelines:** Apply Crete-Lease Release Agent in the fastest, most convenient way.

**Notes:**

a. Producing CCS 1, CCS 2, or CCS 3 concrete surfaces requires the use of non-porous form facings (e.g., elastomeric, steel, plastic, high density overlaid plywood, fiberglass, ABS, PVC and urethane or epoxy coatings on wood).

b. An ultra thin film (0.0005 inch) of Crete-Lease 880-VOC-Xtra Release Agent releases easier than thicker films.

**SPRAY COVERAGE RATES TO OBTAIN HIGH VISUAL IMPACT CONCRETE**

Optimum Coverage Rate For  
**CCS 2**                      **CCS 3**

Flat Spray Tip	Pressure	CCS 2	CCS 3
<b>8001 tip</b>	30-40 psi	40 sq ft/10 sec	20 sq ft/10 sec
<b>800067 fine tip</b>	50-60 psi	35 sq ft/10 sec	15 sq ft/10 sec
<b>800050 fine tip</b>	50-60 psi	25 sq ft/10 sec	12 sq ft/10 sec
<b>Typical Wet Film Thickness</b>	0.0005 to 0.001 inch	0.0001 to 0.0025 inch	

- Notes:**
1. The coverage rates are for smooth non-porous forms.
  2. Distance between form and spray tip is constant; typically between 12 and 18 inches.

**COVERAGE WITH CRETE-LEASE 880-VOC-Xtra**

Form Surface	(sq ft/gal)
Hard & Smooth	1,600
Pre-oiled Plywood	1,100
Untreated Plywood	800

c. In producing CCS 1 concrete, the surface of the form or formliner must be free from defects. Joints must be water tight.

d. Protect form and formliner surfaces treated with release agent, from precipitation, dust and debris when producing CCS 1, CCS 2 and CCS 3.

**Storage:** Factory sealed containers will keep up to 2 years at temperatures from -20°F to 140°F (-30°C to 60°C). Crete-Lease 880-VOC-Xtra is a class 3B liquid for purposes of meeting OSHA storage requirements, which means much more may be stored under roof. (Section 1910.106.)

Store drums horizontally to prevent standing water from collecting over the bungs.

**6. AVAILABILITY AND COST**

**Availability:** Crete-Lease 880-VOC-Xtra is available in 1 and 5 gallon containers; orange and white striped 55 gallon drums and 275 gallon MegaPaks. Contact Cresset Chemical Company for nearest distributor.

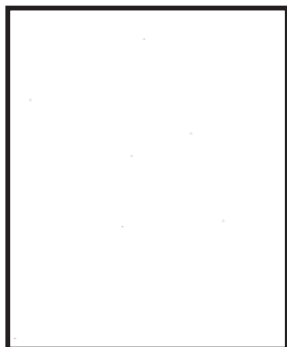
**Cost:** The cost on hard, smooth surfaces is about \$0.008 per square foot (January 2007).

**7. LIMITED WARRANTY**

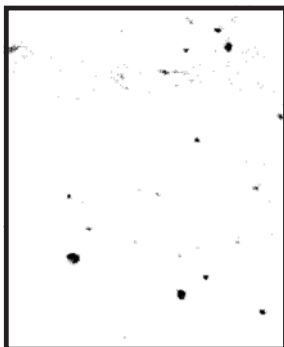
Cresset Chemical Company warrants the product against defects in materials for a period of 1 year from purchase. If Cresset receives notice of such defects during the warranty period, Cresset at its option will either replace the product or refund the purchase price. THE WARRANTY SET FORTH ABOVE IS EXCLUSIVE AND NO OTHER WARRANTY, WHETHER WRITTEN OR ORAL, IS EXPRESSED OR IMPLIED. CRESSET SPECIFICALLY DISCLAIMS THE WARRANTIES OF MERCHANTABILITY AND FITNESS FOR A PARTICULAR PURPOSE. THE REMEDIES PROVIDED HEREIN ARE BUYER'S SOLE AND EXCLUSIVE REMEDIES. IN NO EVENT SHALL CRESSET CHEMICAL COMPANY BE LIABLE FOR DIRECT, INDIRECT, SPECIAL, INCIDENTAL OR CONSEQUENTIAL DAMAGES (INCLUDING LOSS OF PROFIT) WHETHER BASED ON CONTRACT, TORT OR ANY OTHER LEGAL THEORY.

**8. MAINTENANCE**

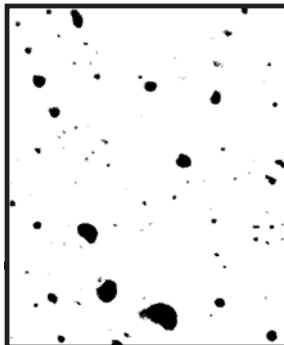
Cover, or store drums on side to prevent water (i.e. moisture, condensation, rain) from entering the drum.



**CCS 1**



**CCS 3**



**CCS 5**

These simulated Figures are parts of 6 larger photographs which appear in "Cresset Concrete Standards". Write or call for your free brochure. Scale 1:1.