



**Environmental Report Card**

- ✓ Non-toxic
- ✓ Non-flammable
- ✓ VOC compliant
- ✓ Solventless
- ✓ Water based

# CRETE-LEASE® 20-VOC-Xtra Release Agent Specification Sheet

## 1. PRODUCT NAME

Crete-Lease 20-VOC-Xtra Release Agent

## 2. MANUFACTURER

Cresset Chemical Co., Inc.  
 One Cresset Center  
 Weston, Ohio 43569  
**800-367-2020** USA & Canada  
 419-669-2041  
 (FAX) 419-669-2200  
 www.Cresset.com  
 Cresset@Cresset.com

## 3. PRODUCT DESCRIPTION

**Basic Use:** Crete-Lease 20-VOC-Xtra Release Agent permits easy stain free removal of forms or formliners from hardened concrete. It:

- Reduces bugholes on the concrete surface
- Doesn't interfere with adhesion of caulk, architectural coatings, paint, sealers and curing compounds on cured concrete surfaces when properly applied
- Permits empty container disposal in dumpsters and nonhazardous landfills
- Promotes longer life of plywood by acting as a water repellent from inside the wood
- Still produces architectural looking concrete surfaces if over-applied
- Is odorless
- Meets the most rigid OSHA and EPA regulations in any state
- Is a water based release agent
- Applies over residual form oils on used forms
- Helps prevent rusting of steel forms
- Increases volume that may be stored and simplifies DOT driver and HazMat regulations
- Eliminates bugholes even when applied 5 times thicker than needed:
  - No staining
  - Does not cause efflorescence

**Limitations:** Crete-Lease 20-VOC-Xtra separates if frozen once or if stored for more than 8 months. Vigorous stirring renews it. Use Crete-Lease 727-Xtra where freezing occurs (except

## TABLE OF PROPERTIES

Chemically Active	Yes
Neutralized	Yes
Flash Point	>350°F
Freeze Temperature	31°F (0°C)
Freeze Damage	Yes
Viscosity (centipoises)	500 @ 68°F (20°C)
Odor	None
Color	White
Opacity	Opaque
Type	Semi-drying
Storage Life	8 Months
Pounds per Gallon	7.8
VOC	160 g/L

**Composition:** A proprietary emulsion of vegetable oils in water. Contains no waxes, no silicones...no carcinogens.

that Crete-Lease 727-Xtra is not usable on all of the same forms).

**Ground Shipping in the USA:** Containers holding 275 gallons or 55 gallons or 5 gallons or less (regardless of the number of containers) are not federally regulated and shipping product in the Cresset package does not require following hazardous shipping requirements. Drivers do not need a HazMat endorsement of their CDL. DOT HazMat training is not required.

**Applicable Standards:** Exceeds California SCAQMD rule 1113-90: Corps of Engineers, "Civil Works Construction Guide Specifications," CW-03101, Section 5.3 and Section 8; and Corps of Engineers, "Guide Specification Military Construction," CEGS-03300, Section 10.8.

## 4. TECHNICAL DATA

Please see Tables.

## TABLE OF FORM AND FORMLINER COMPATIBILITY

Plywood	All Grades, Pre-oiled, Overlaid (LDO, MDO, HDO)
Plastics	Fiberglass Reinforced, Expanded Polystyrene Foam, ABS, PVC
Coatings	Epoxy, Urethane, Latexes
Elastomerics	Silicone, SBR, Natural Rubber
Steel	
Aluminum	
Wood	

## 5. APPLICATION

**Preparatory Work:** Form surfaces should be clean, dry and free from contaminants. Apply Crete-Lease just minutes before concrete is placed or up to 14 days if treated surface is protected.

**Methods:** Your choice of application methods will determine the final appearance of the concrete. Use Release Method when a form release is the primary concern; use a Visual Guide Specification for concrete where both visual impact and form reuse are primary concerns.

**Release Method:** Apply with any type applicator or technique. Use a sprayer, roller, brush, or mop.

Too much release agent will cause bugholes and "wormtracks" (as seen in CCS 6 - [www.Cresset.com/ccs.htm](http://www.Cresset.com/ccs.htm)), and an increased difficulty in stripping.

**Visual Guide Specification:** CCS 2 (Cresset Concrete Standard 2) is attainable when coverage rates are carefully

followed. See Spray Coverage Rate Chart.

**Visual Guide Specification Notes:**

1. A properly applied film of Crete-Lease 20-VOC-Xtra appears as many white spots very closely spaced. Clear "oily looking" patches appear as the water evaporates. Frequently the application is not very uniform.

2. With Crete-Lease 20-VOC-Xtra, the thinner the film the better the appearance, plus the forms strip easier.

3. Form surfaces used in producing CCS 1 and CCS 2 must be as clean as the hood on a showroom car before the release agent is applied. Protect treated surfaces from precipitation, dust and debris.

4. Non-porous form surfaces are required to uniformly produce CCS 1 and CCS 2. Examples include HDO plywood, elastomerics, all plastics, metals and coatings.

5. When producing CCS 4, CCS 5 or CCS 6 concrete surfaces, you may use pre-oiled or untreated plywood, or LDO or MDO overlaid plywood.

6. Sprayers designed for applying sealers and curing compounds typically apply 10 times the needed Crete-Lease. They are not usable for producing CCS 1 or CCS 2.

7. Produce CCS 2 with Crete-Lease 727-Xtra, 880-VOC-Xtra, 880, and 20-VOC-Xtra. Use Crete-Lease 727-Xtra when form reuse is more important than visual impact. When superplasticizers are used in the concrete mixture or visual impact is especially important use Crete-Lease 880 or Crete-Lease 880-VOC-Xtra. Use Crete-Lease 20-VOC-Xtra to meet air quality (VOC), hazard and/or pollution regulations.

**Storage:** Factory sealed containers will keep up to 8 months at temperatures from 40°F to 100°F (1°C to 40°C). As a class 3B liquid, Section 1910.106 of OSHA

**SPRAY COVERAGE RATES TO OBTAIN HIGH VISUAL IMPACT CONCRETE**

Optimum Coverage Rate For  
**CCS 2                      CCS 3**

Flat Spray Tip	Pressure		
<b>80015LP tip</b>	30-40 psi	70 sq ft/10 sec	<b>Not very sensitive to applied thickness.</b>
<b>8001 tip</b>	40-50 psi	60 sq ft/10 sec	
<b>800067 fine tip</b>	70-80 psi	35 sq ft/10 sec	

- Notes:**
1. The coverage rates are for smooth non-porous forms.
  2. Distance between form and spray tip is constant; typically between 12 and 18 inches.

standards does not apply for storage purposes. Must be stored at temperatures above 35°F.

**Precautions:** Fewer precautions than with oil based release agents. See Material Safety Data Sheet for complete details.

**COVERAGE WITH Crete-Lease 20-VOC-Xtra**

Form Surface	(sq ft/gal)
Hard & Smooth	1,000
Pre-oiled Plywood	900
Untreated Plywood	700

**6. AVAILABILITY AND COST**

**Availability:** Crete-Lease 20-VOC-Xtra Release Agent is available in 1 and 5 gallon containers; orange and white striped 55 gallon drums and 275 gallon MegaPaks. Contact Cresset Chemical Company for your nearest distributor.

**Cost:** The cost on hard, smooth surfaces is about \$0.007 per square foot (January 2007).

**7. LIMITED WARRANTY**

Cresset Chemical Company warrants the product against defects in materials for a period of 8 months from purchase. If Cresset receives notice of such defects during the warranty period, Cresset at its option will either replace the product or refund the purchase price. THE WARRANTY SET FORTH ABOVE IS EXCLUSIVE AND NO OTHER WARRANTY, WHETHER WRITTEN OR ORAL, IS EXPRESS OR IMPLIED. CRESSET SPECIFICALLY DISCLAIMS THE WARRANTIES OF MERCHANTABILITY AND FITNESS FOR A PARTICULAR PURPOSE. THE REMEDIES PROVIDED HEREIN ARE BUYER'S SOLE AND EXCLUSIVE REMEDIES. IN NO EVENT SHALL CRESSET CHEMICAL COMPANY BE LIABLE FOR DIRECT, INDIRECT, SPECIAL, INCIDENTAL OR CONSEQUENTIAL DAMAGES (INCLUDING LOSS OF PROFIT) WHETHER BASED ON CONTRACT, TORT OR ANY OTHER LEGAL THEORY.

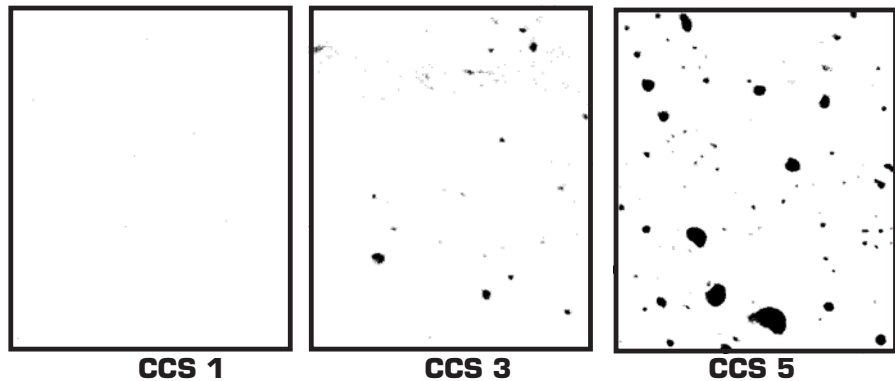
**8. MAINTENANCE**

Not required.

**9. TECHNICAL SERVICES**

To keep you abreast of new ideas in the development, selection and application techniques of release agents, we publish newsletters, technical brochures, specification sheets and Material Safety Data Sheets.

Over 75 distributors in the United States, Canada, Australia and Germany to serve you. Your technical inquiries are welcome, please call, write or FAX.



These simulated Figures are parts of 6 larger photographs which appear in "Cresset Concrete Standards". Write or call for your free brochure. Scale 1:1.